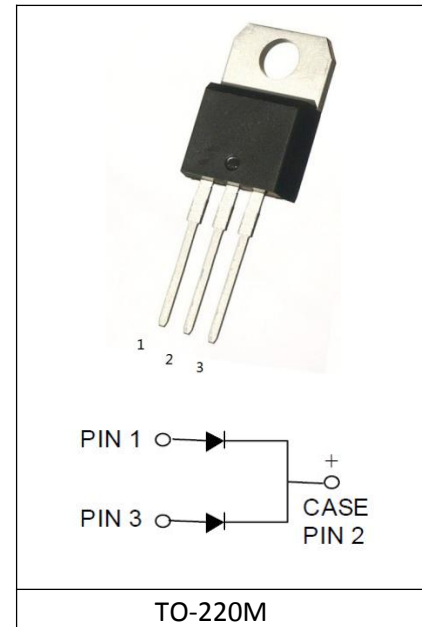


## SCHOTTKY RECTIFIERS

### Features:

- Low power loss,high efficiency
- High surge capacity
- For use in low voltage,high frequency inverters, free wheeling,and polarity protection applications
- Metal silicon junction,majority carrier conduction
- Guard ring for over voltage protection



### Absolute Maximum Ratings( $T_c=25^{\circ}\text{C}$ ):

Characteristics	Symbol	Rating	Unit
Maximum Repetitive Reverse Voltage	$V_{RRM}$	100	V
Average Rectified Forward Current	$I_{F(AV)}$	20	A
Non-repetitive Peak Forward Surge Current 8.3ms Single Half-Sine-Wave	$I_{FSM}$	135	A
Collector power dissipation $T_a=25^{\circ}\text{C}$	$P_{tot}$	2.0	W
Junction temperature	$T_j$	175	$^{\circ}\text{C}$
Storage temperature range	$T_{STG}$	-55~175	$^{\circ}\text{C}$

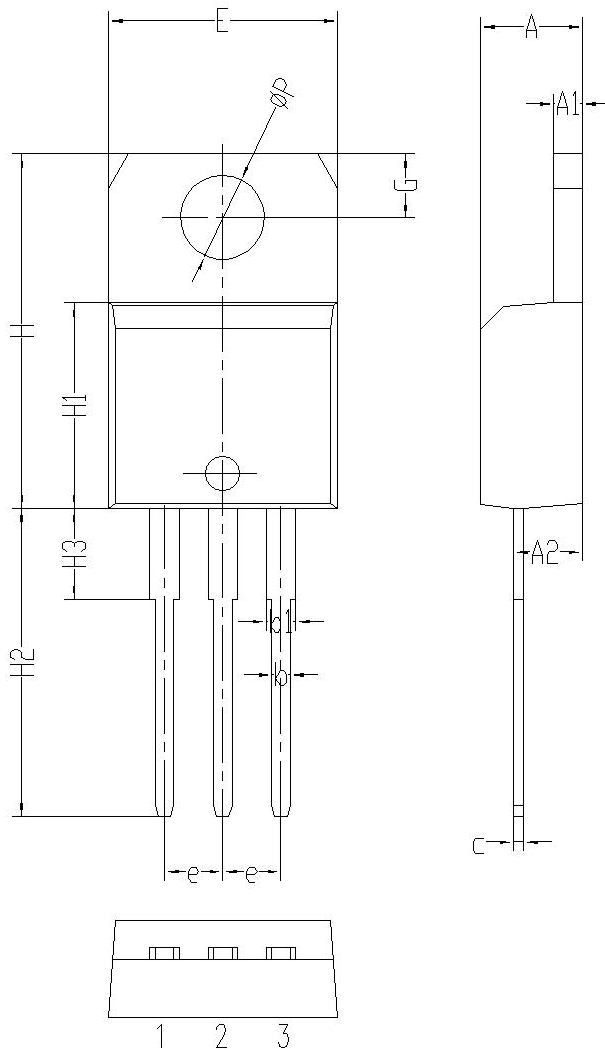
### Electrical Characteristics( $T_c=25^{\circ}\text{C}$ ) :

Characteristics	Symbol	Test Condition	Min	Typ	Max	Unit
Forward Voltage	$V_F$	$I_F=20\text{A}; T_C=25^{\circ}\text{C}$		0.8	0.9	V
Reverse Current	$I_R$	$V_R=100\text{V}; T_C=25^{\circ}\text{C}$ $V_R=100\text{V}; T_C=125^{\circ}\text{C}$			0.01 10.0	mA
Peak Repetitive Reverse Surge Current	$I_{RRM}$	2.0 us Pulsu Width , $f=1.0\text{KHZ}$ $T_J<175^{\circ}\text{C}$			5	A

Symbol	Paramter	Typ	Units
$R_{\theta JC}$	Junction-to-Case	0.9	$^{\circ}\text{C}/\text{W}$

## Package Information

### TO-220M PACKAGE



	單位: mm		
	MIN	NOM	MAX
A	4.05	4.25	4.45
A1	1.05	1.25	1.45
A2	2.35	2.55	2.75
b	0.6	0.8	1
b1	1.12	1.32	1.52
c	0.25	0.45	0.65
e	2.34	2.54	2.74
E	9.95	10.15	10.35
H	15.3	15.5	15.7
H1	8.8	9	9.2
H2	13	13.5	14
H3	3.8	4	4.2
G	2.6	2.8	3
ØP	3.6	3.8	4